

SYCAMORE



The Sycamore is a well thought out 4 bedroom house comprising a living room, fitted kitchen and a cloakroom on the ground floor. Bedrooms two, three, four and a family bathroom are situated on the first floor. Bedroom four could alternatively be used as a study/computer room. The second floor offers a large bedroom with an en-suite shower room, plus wardrobe area.

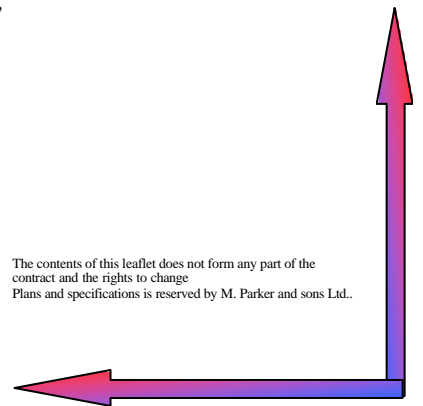


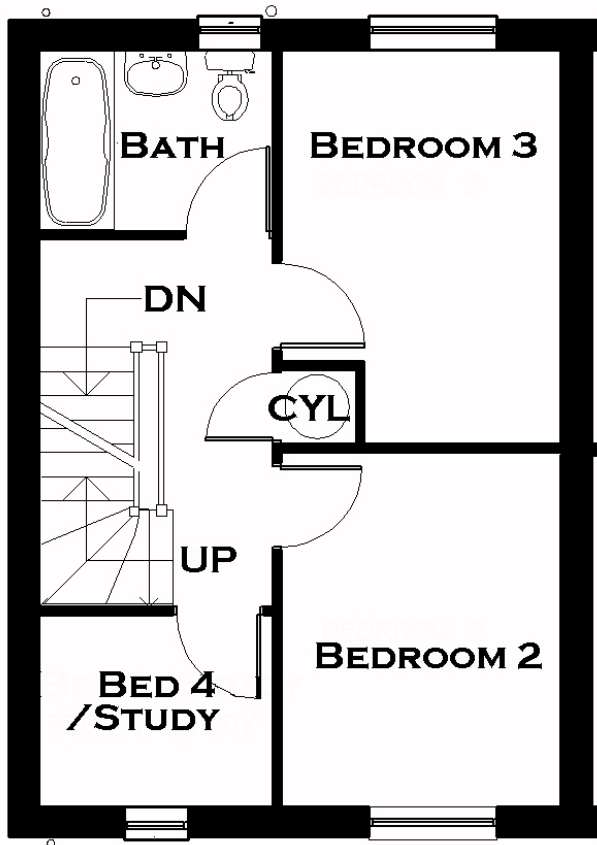
Living Room Diner	4.900	x 3.700	16'00''	x 12'1''
Kitchen	3.300	x 2.750	10'8''	x 9'0''
Bedroom 1	4.900	x 3.650	16'00''	x 11'10''
Bedroom 2	3.300	x 2.625	10'8''	x 8'6''
Bedroom 3	3.700	x 2.625	12'0''	x 8'6''
Bedroom 4	2.200	x 1.800	7'2''	x 5'9''
Bathroom	2.200	x 1.800	7'2''	x 5'9''

Tel 01775 724777 Fax.01775762171
Email stuart@mparkerandsons.co.uk
www.mparkerandsons.co.uk

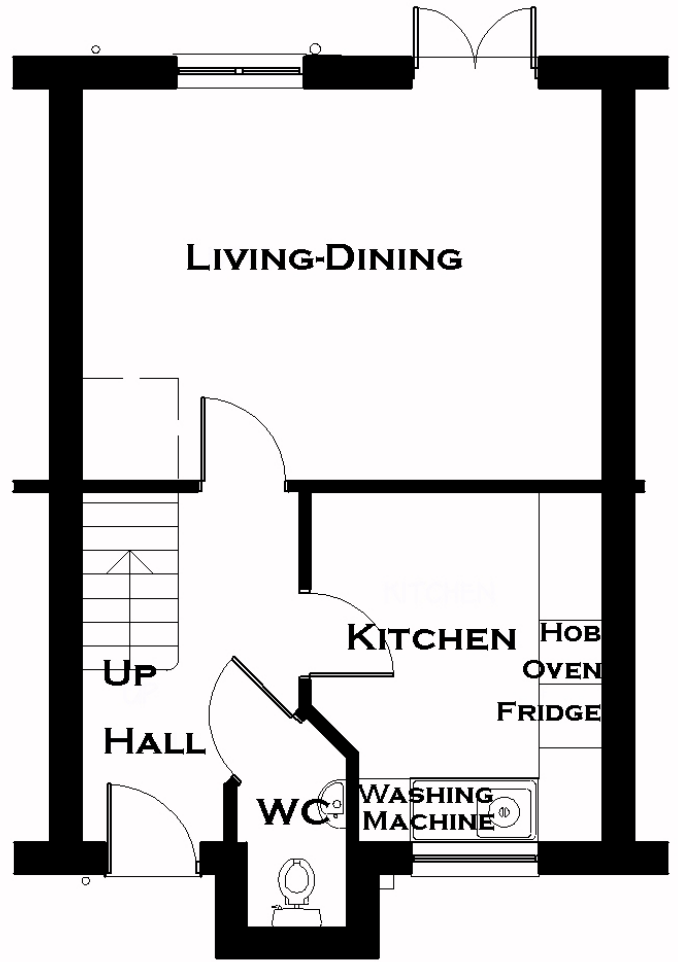
M. Parker and Sons.
Bourne Road
Pode Hole,
Spalding
Lincs

The contents of this leaflet does not form any part of the contract and the rights to change Plans and specifications is reserved by M. Parker and sons Ltd..





FIRST FLOOR



GROUND FLOOR

Sycamore



SECOND FLOOR